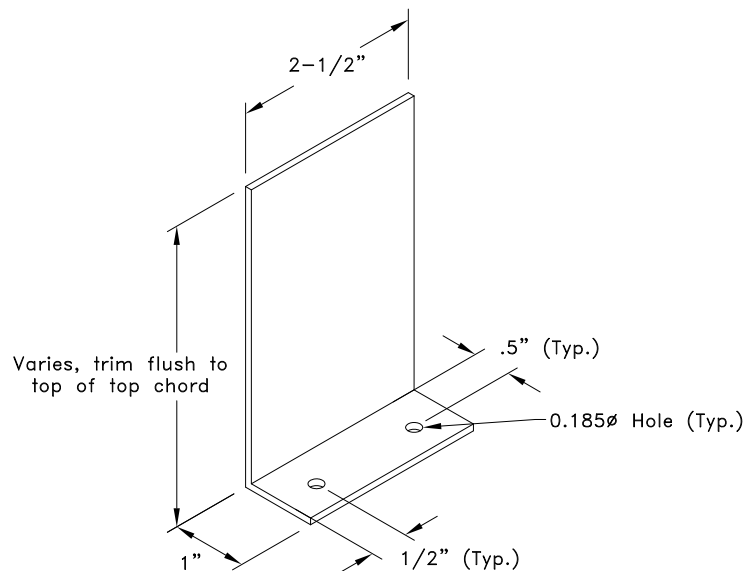
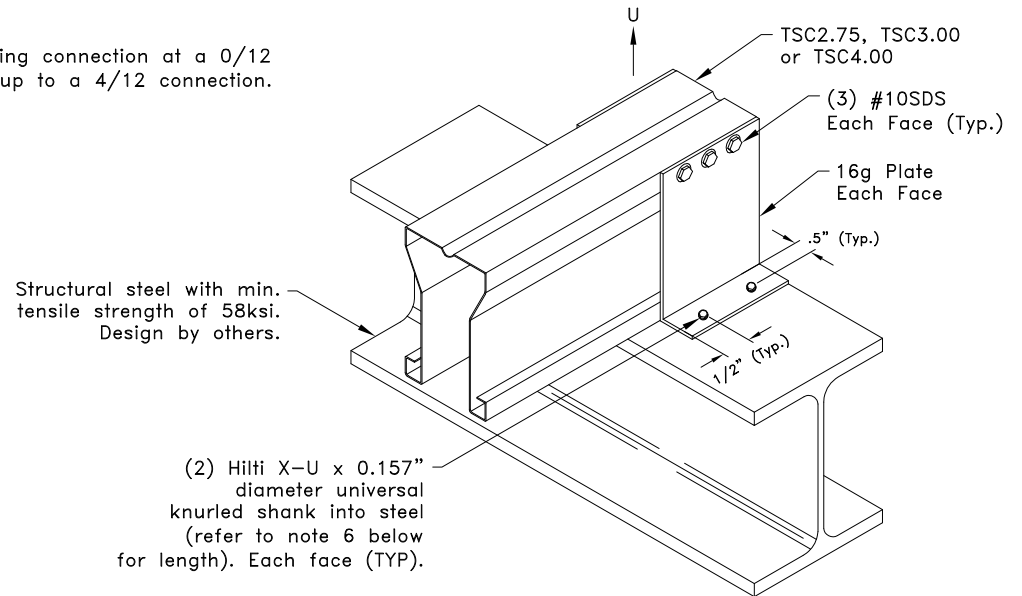


****This detail shows this truss to bearing connection at a 0/12 pitch. But this connection will work up to a 4/12 connection.**



16g Plate
16g ASTM A653 Grade 33 G60
Bare Metal Thickness: $t = 0.0538"$



Total Uplift Capacity: $U = 800\#$ (Clip on each face required)

General Notes:

1. SDS = Self-Drilling Tapping Screw
2. Screw end distance and edge distance is 9/32" minimum. Screw spacing is 9/16" minimum.
3. Refer to TrusSteel Standard Detail TS020 for additional requirements.
4. Attachment of second clip on opposite face of chord is identical to what is detailed.
5. Pins must be driven through existing holes in clip and be driven perpendicular to steel surface. Pin spacing is 1-1/2".
6. Care must be taken to insure pins are not overdriven. Pins that are overdriven may puncture surface of clip causing damage. If clip is damaged, the connection will not carry any load.
7. Pin length must be long enough to insure the tip penetrates completely through the steel. For steel $\geq 3/4"$ thick tip penetration of at least 1/2" is required.
8. Do not install pins into area of beam flange directly above beam web.
9. Refer to manufacturers specification and code approval regarding proper installation of anchor.
10. Reference manufacturers code approval for other steel pins.
11. U refers to uplift.
12. Cold-Formed Steel Calculations are per the 2010 addendum to the AISI 2007 "North American Specifications for the Design of Cold-Formed Steel Structural Members" (S100-07/S2-10).



www.TrusSteel.com

Florida: 2400 Lake Orange Drive, Suite 150 / Orlando, FL 32837 / (800) 755-6001
Missouri: 13723 Riverport Drive, Suite 200 / Maryland Heights, MO 63043 / (800) 326-4102

Top Chord Bearing Uplift Connection Detail

Alpine, a division of ITW Building Components Group, Inc. shall not be responsible for any performance failure in a connection due to a deviation from this detail. Any variation from this detail shall be approved in advance by Alpine, a division of ITW Building Components Group, Inc.

Custom Detail:

CD150816

Date:

08/21/15

Custom Detail Category:

Uplift Connection